

TUB REINFORCEMENT KIT

Vehicle Model: Toyota Tundra 5.5 & 6.5Ft Bed

Year of manufacture: 2022 onwards

Part Number: KIT040718

Installation Instructions

Installation Time: Approx. 30 mins

Important



- Read instructions carefully before installation.
- It is strongly recommended that installation is conducted by an authorized dealer.
- This product must be installed exactly as specified in these instructions. Failure to do so may result in improper fit and/or retention/failure of components.

PERSONAL PROTECTIVE EQUIPMENT:



Mask



Rubber Gloves



Goggles



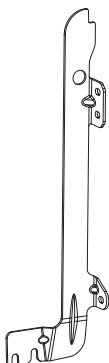
Hearing Protection

TOOLS:

13mm Socket & Ratchet with long extension
5mm Allen Key
T40 Torx Key
Small Screwdriver

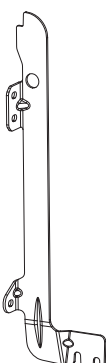
PARTS IN FITTING KIT

1



CLIP4146PC-RH
TUB SUPPORT BRACKET
QTY: 1

2



CLIP4146PC-LH
TUB SUPPORT BRACKET
QTY: 1

3



SCRW1136
SCREW M8x30
QTY: 6

4

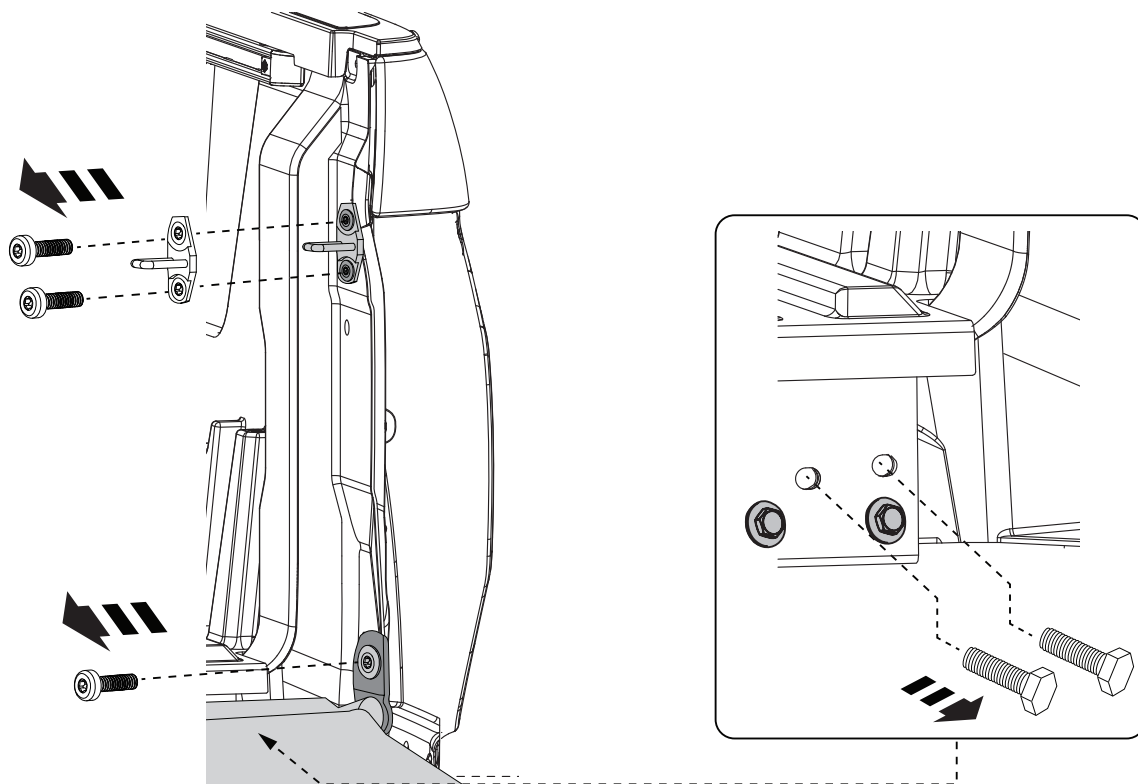


WASH70007
FLAT WASHER
QTY: 2

5



WASH6094
SPACER
QTY: 2



STEP

1

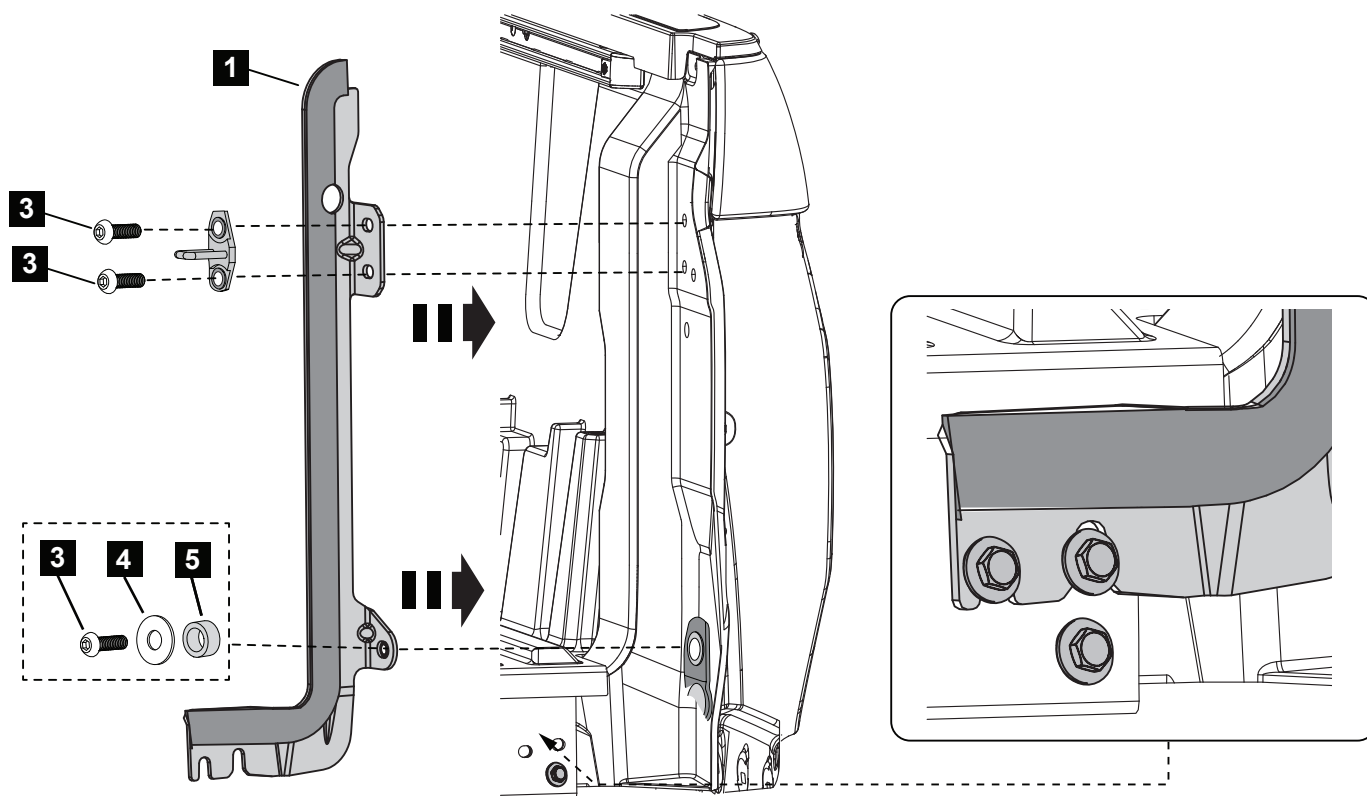
Remove the tailgate striker using T40 Torx key. Retain the striker and discard screws.

Remove and discard the top screw holding the tailgate.

IMPORTANT: Do not stand on the open tailgate as it is partially loose now.

Using 12mm socket undo the two Hex head bolts behind the tailgate. Only need to be loosen 5-6mm to allow the bracket to drop in from the top.

You can access the bolts from underneath the car above the bumper.



STEP

2

Fit the RHS Tub support bracket to the tub. First drop it down between the tub and tailgate so the two hex screws slot into the bottom cutouts. Secure the bracket and striker using 2x screws (3) and at the bottom with assembled screw (3), washer (4) and spacer (5) as shown.

NOTE: For the LHS it is recommended to remove the tail lamp and disconnect the gas strut at the top to relieve the tension on the tailgate.