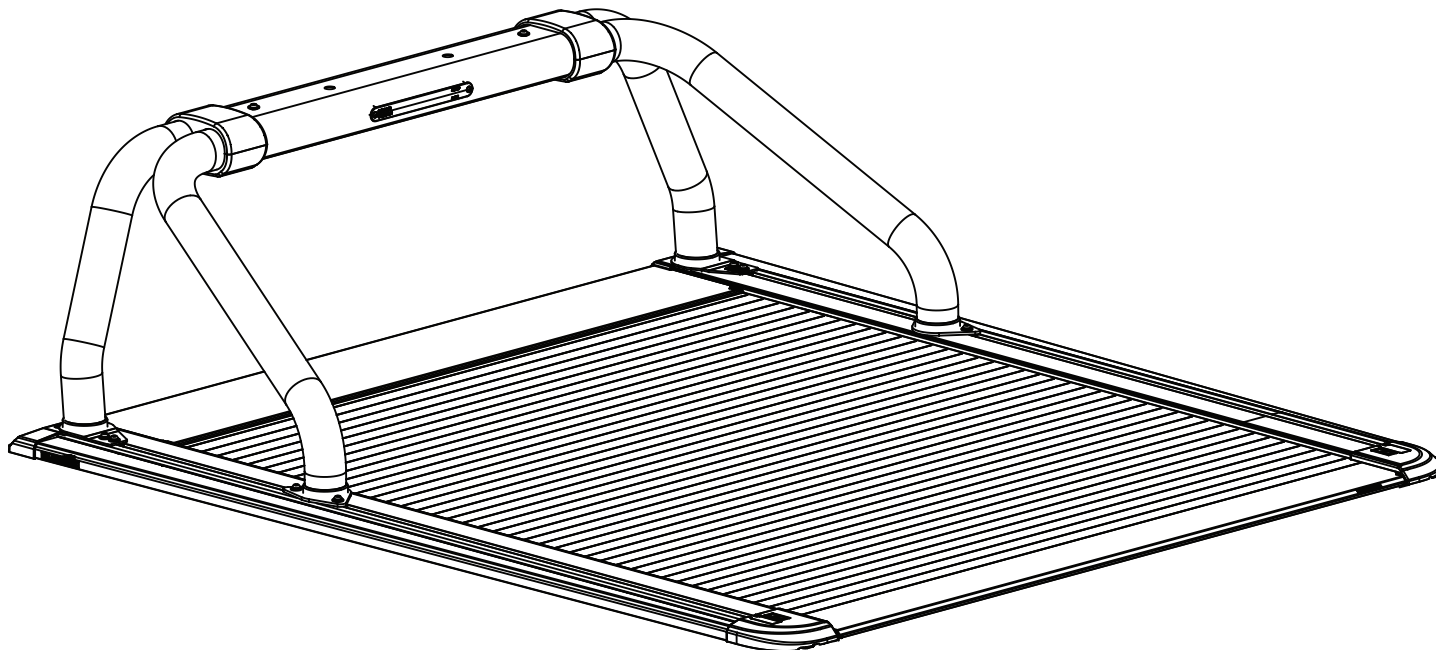




## FRD 150

### EGR Rolltrac Sports Bar Installation Instructions



Installation Time: Approx. 60 mins

Place these instructions in vehicle's glove box after installation is complete

#### General Notes

- Read through the fitting instructions before installation of accessory.
- Always install the accessory following the fitting instructions. Failure to do so may cause damage to the vehicle or the accessory.
- Ensure all recyclable discarded vehicle accessory components and packaging are recycled following local recycling regulations.
- It is always recommended that this accessory is fitted by a qualified Technician.
- Safely store and protect any removed vehicle components.
- Ensure all bare metal surfaces are protected using Automotive Bare Metal Primer and touch-up paint.
- Please check content of kit using this list and subsequent sketches.
- Remove all metal swarf and dust from all vehicle surfaces if surface is used for accessory installation.

#### Safety Notes

- Check that all work practices comply with safety standards.
- Please wear appropriate clothing and use safety equipment.



#### Care Instructions:

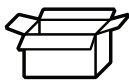


Clean with mild detergent  
and water solution.

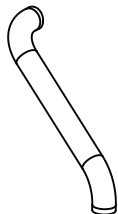


Do not use abrasive  
cleaners or solvents.

### PARTS LIST

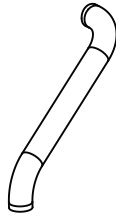


**1**



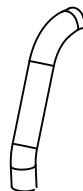
FL Main Pipe  
Qty - 1

**2**



FR Main Pipe  
Qty - 1

**3**



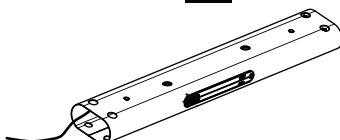
RL Main Pipe  
Qty - 1

**4**



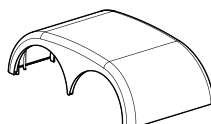
RR Main Pipe  
Qty - 1

**5**



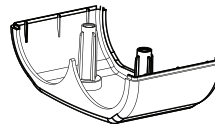
Central Pipe W/ LED Light x1  
Qty - 1

**6**



Plastic Cover Upper  
Qty - 2

**7**



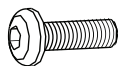
Plastic Cover Lower  
Qty - 2

**8**



Grommet  
Qty - 4

**9**



Pan Head M8\*30  
Screw  
Qty - 8

**10**



FL Bracket  
Qty - 1

**11**



FR Bracket  
Qty - 1

**12**



Rear Bracket (LH/RH)  
Qty - 2

**13**



Flat Hex Bolt M8\*30  
Qty - 8

**14**



M8 Flat Washer  
Qty - 8

**15**



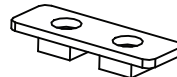
M5 Square Nut  
Qty - 4

**16**



Round Hex Bolt M8\*20  
Qty - 8

**17**



Double Rivet Nut Plate  
Qty - 2

**18**



Rivet Nut Plate  
Qty - 4

**19**



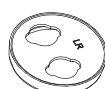
Hex Head Cap Screw  
M5\*60  
Qty - 4

**20**



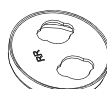
Loom  
Qty - 1

**21**



LH Rear Footcup  
Qty - 1

**22**



RH Rear Footcup  
Qty - 1

**23**



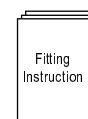
LH Front Footcup  
Qty - 1

**24**



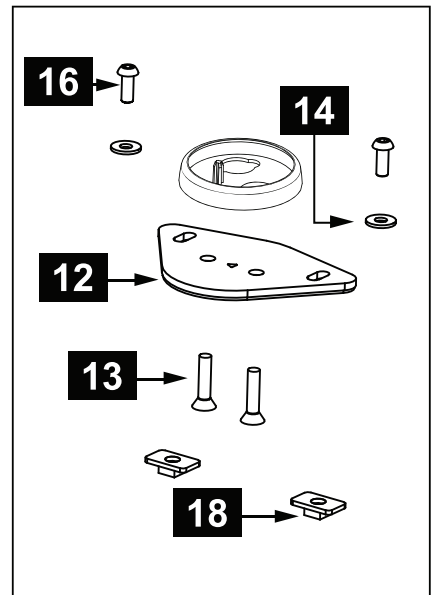
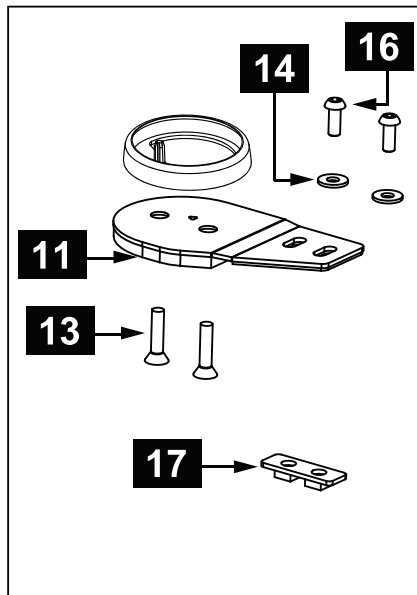
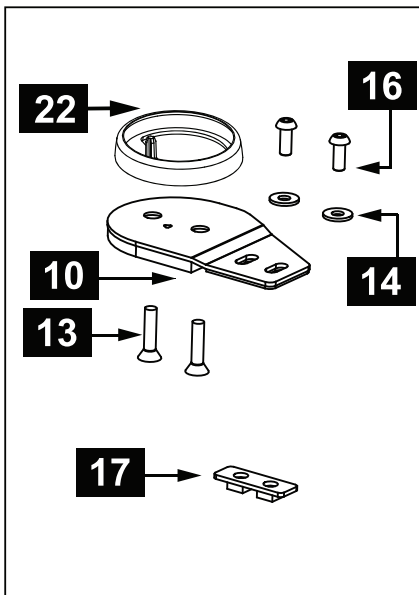
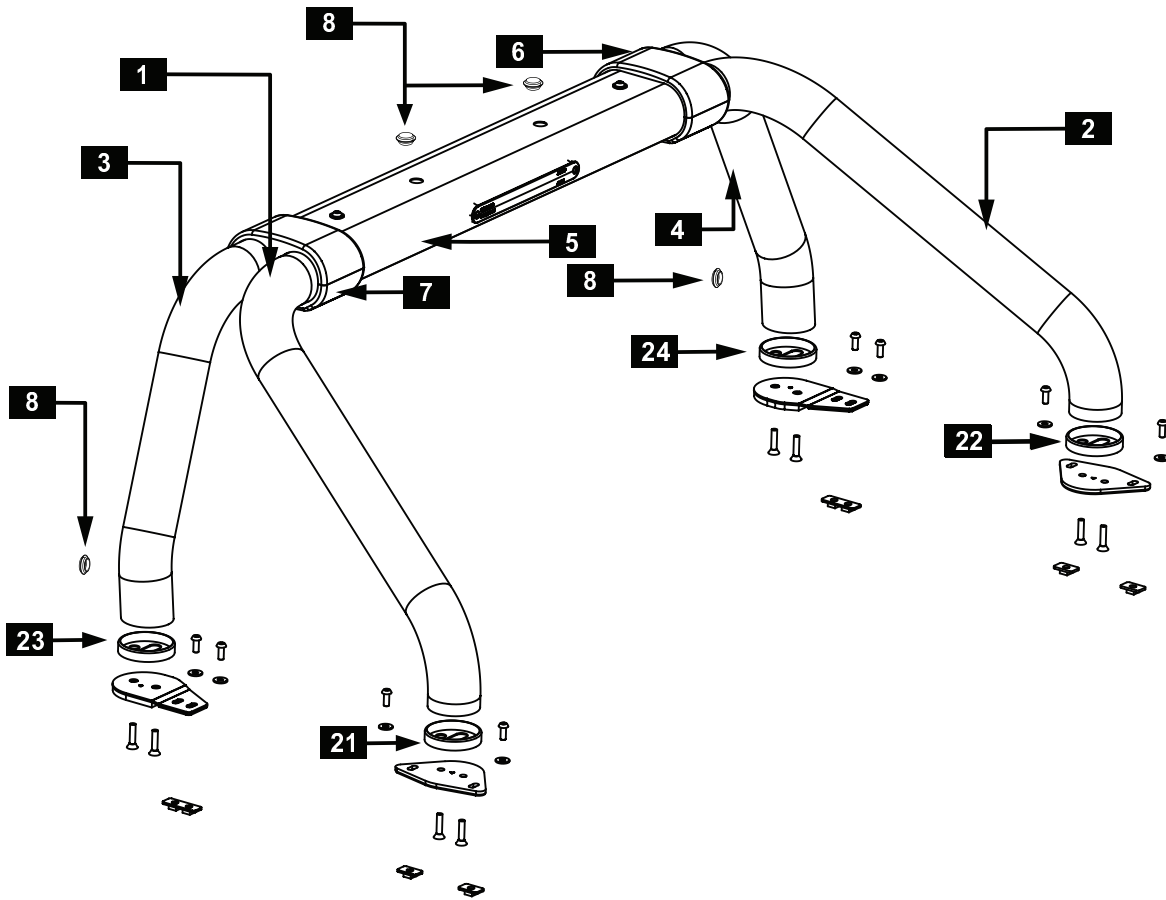
RH Front Footcup  
Qty - 1

**25**

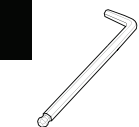


Fitting Instructions  
Qty - 1

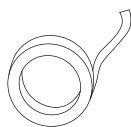
### EXPLODED DRAWING AND REQUIRED TOOLS



#### TOOLS REQUIRED



5mm Allen Key



Electrical Tape



Socket Wrench  
7mm/10mm



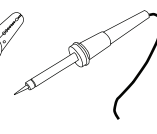
Side  
Cutters



Needle Nose  
Pliers



Wire  
Strippers

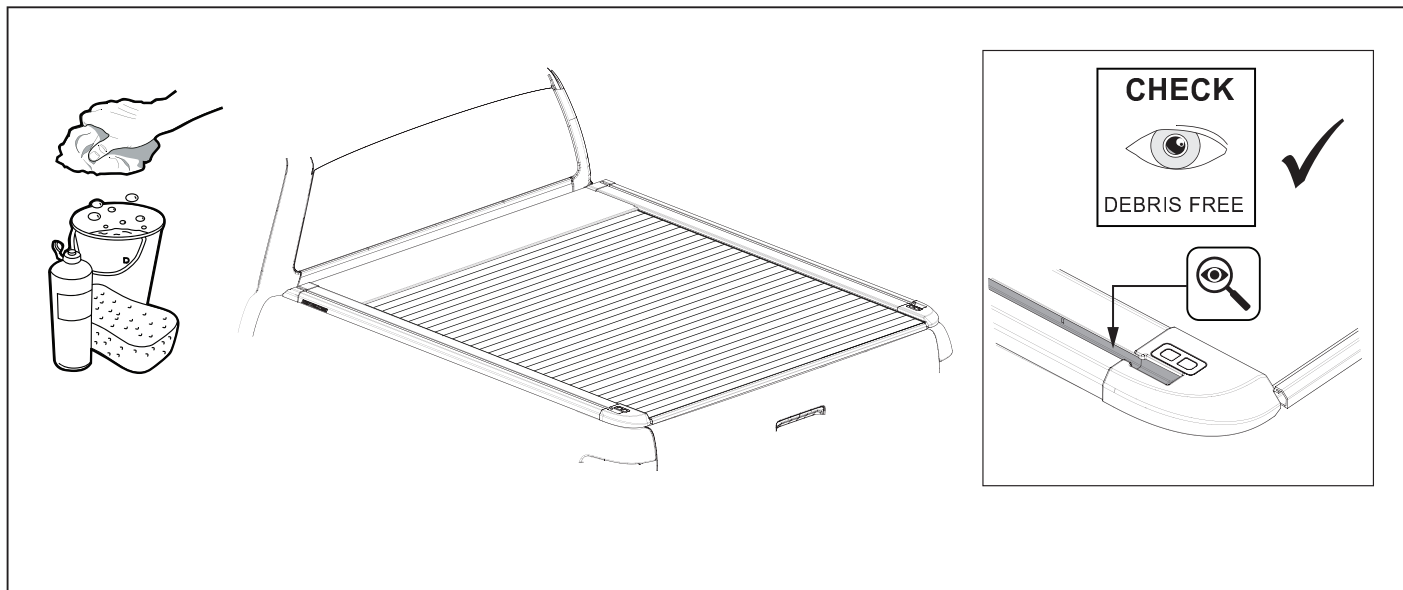


Soldering Iron  
& Solder

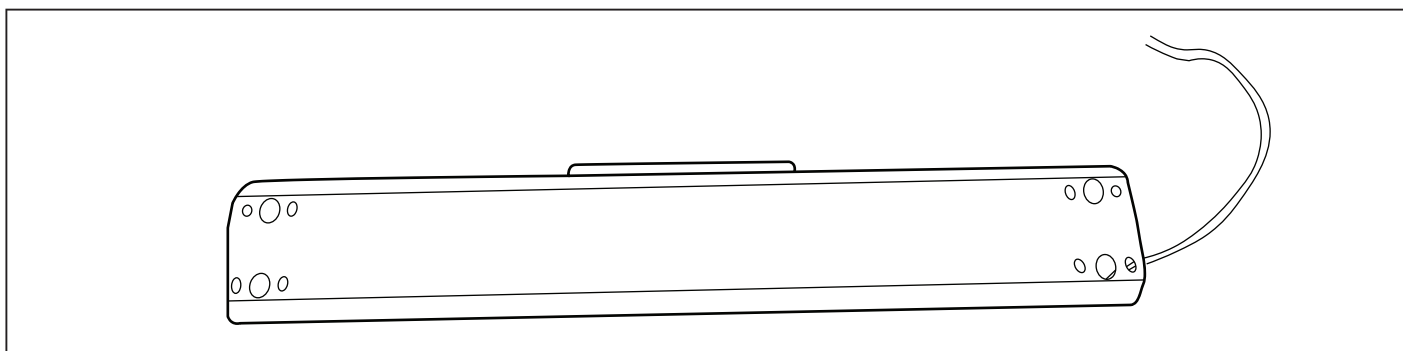


Two  
People  
Required

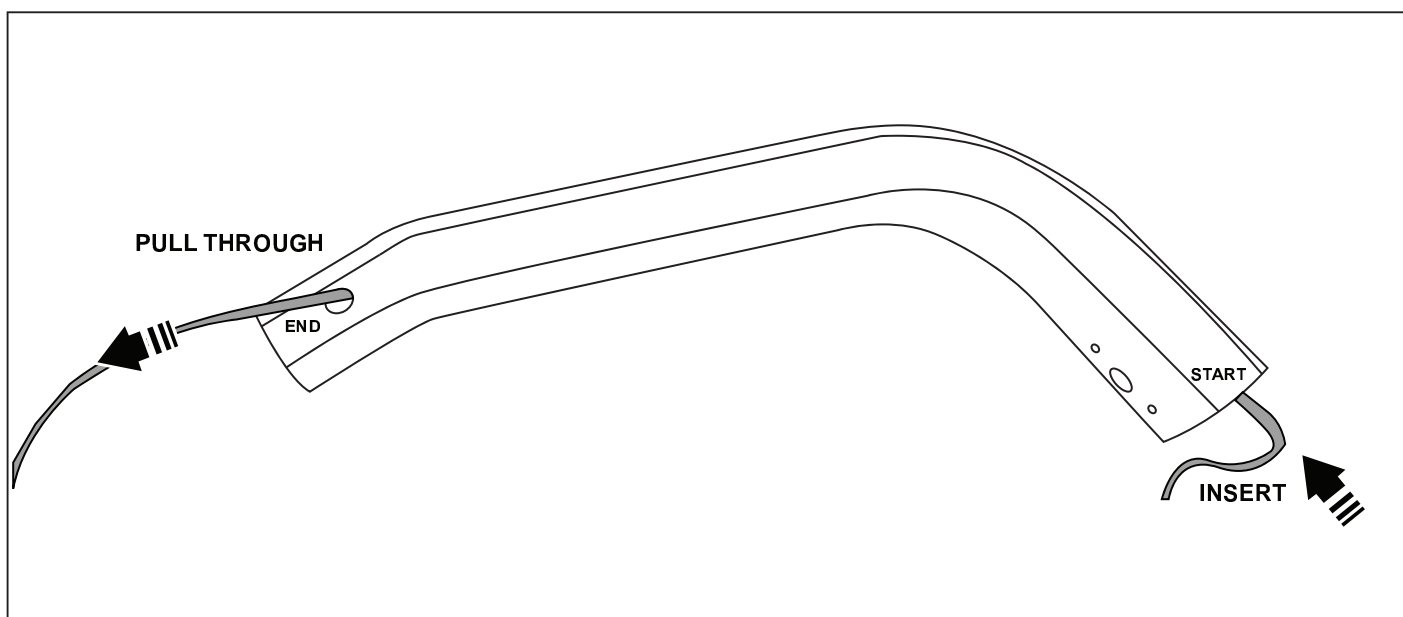
### INSTALLATION INSTRUCTIONS



1. Prepare the surface of the RollTrac side rails by cleaning them thoroughly ensuring that any debris in the RollTrac side rail T-channels is completely removed.



2. Lay center section of Sports Bar upside down on soft, flat surface.

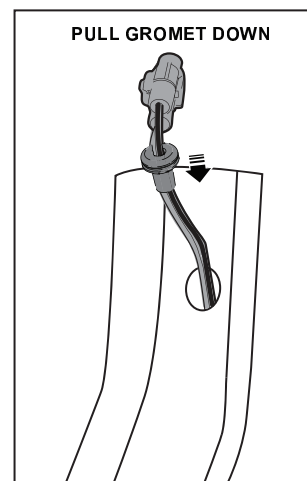
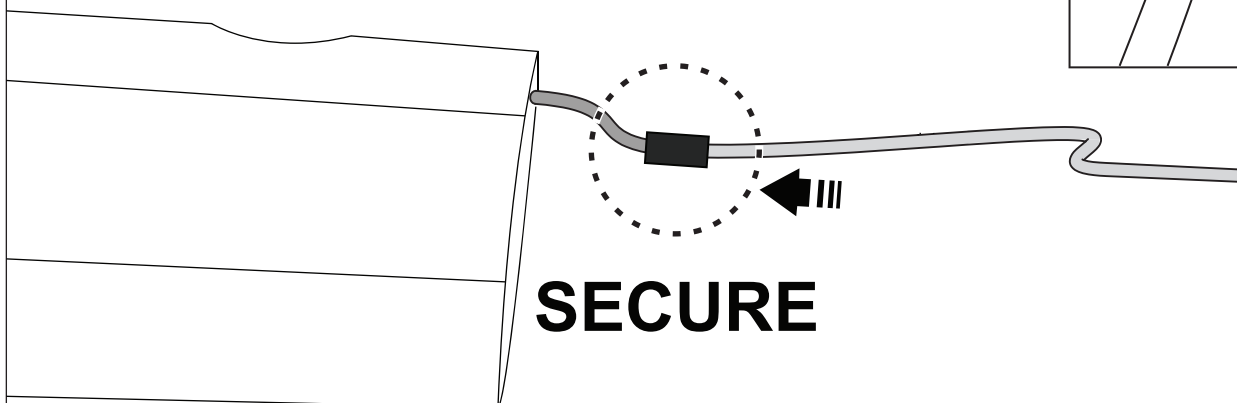


3. Feed pull cable through the RH side Front Leg of the Sports Bar & out the lower hole at the rear of the leg.

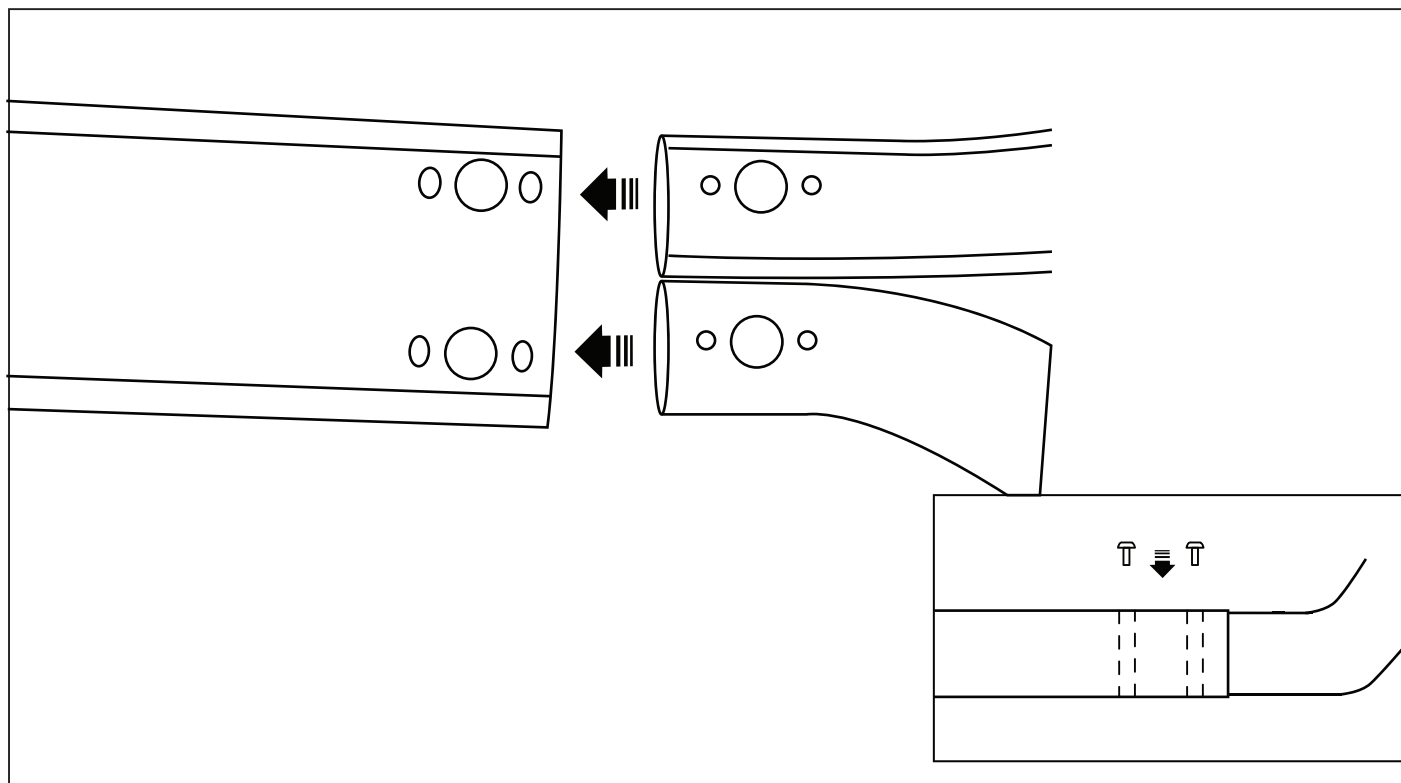




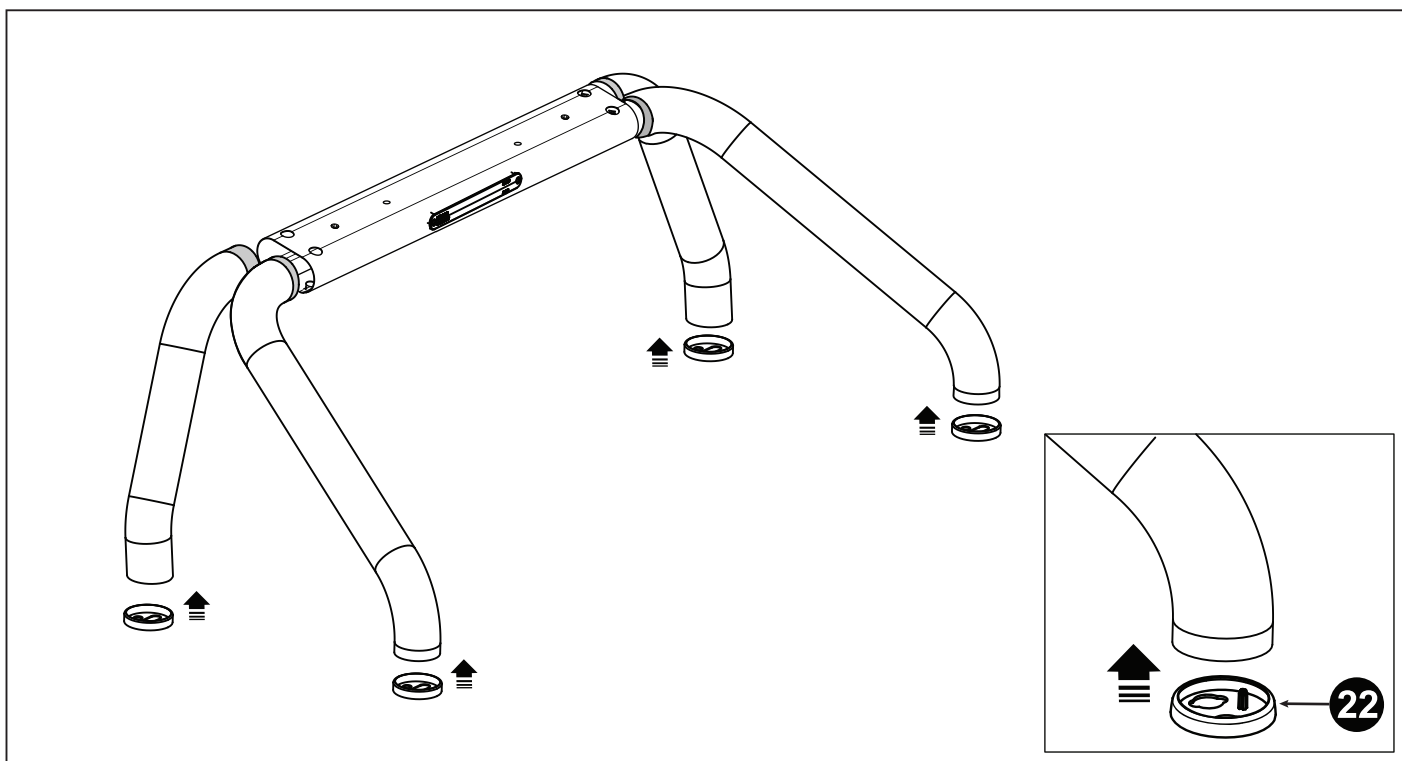
### PULL FROM END



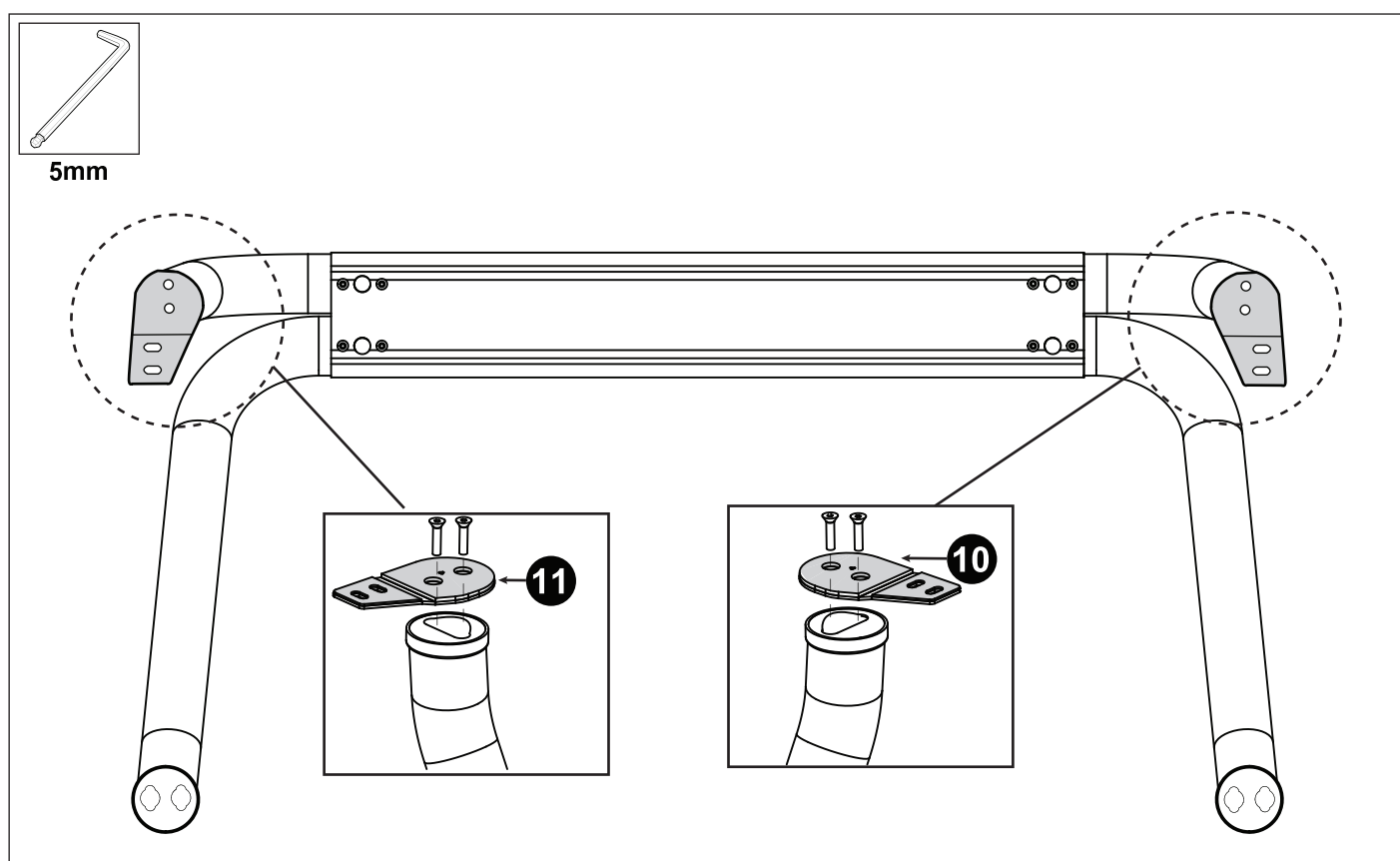
4. Secure brake light wiring loom to feed pull cable with electrical tape.  
Pull brake light loom through the leg & out the hole in bottom of the leg.  
Pull loom out through lower hole as far as loom will go, install grommet around hole.



5. Insert RH Rear Leg into centre section | Loosely tighten M8x20mm bolt. Insert RH Front Leg.  
Repeat for LH Legs.



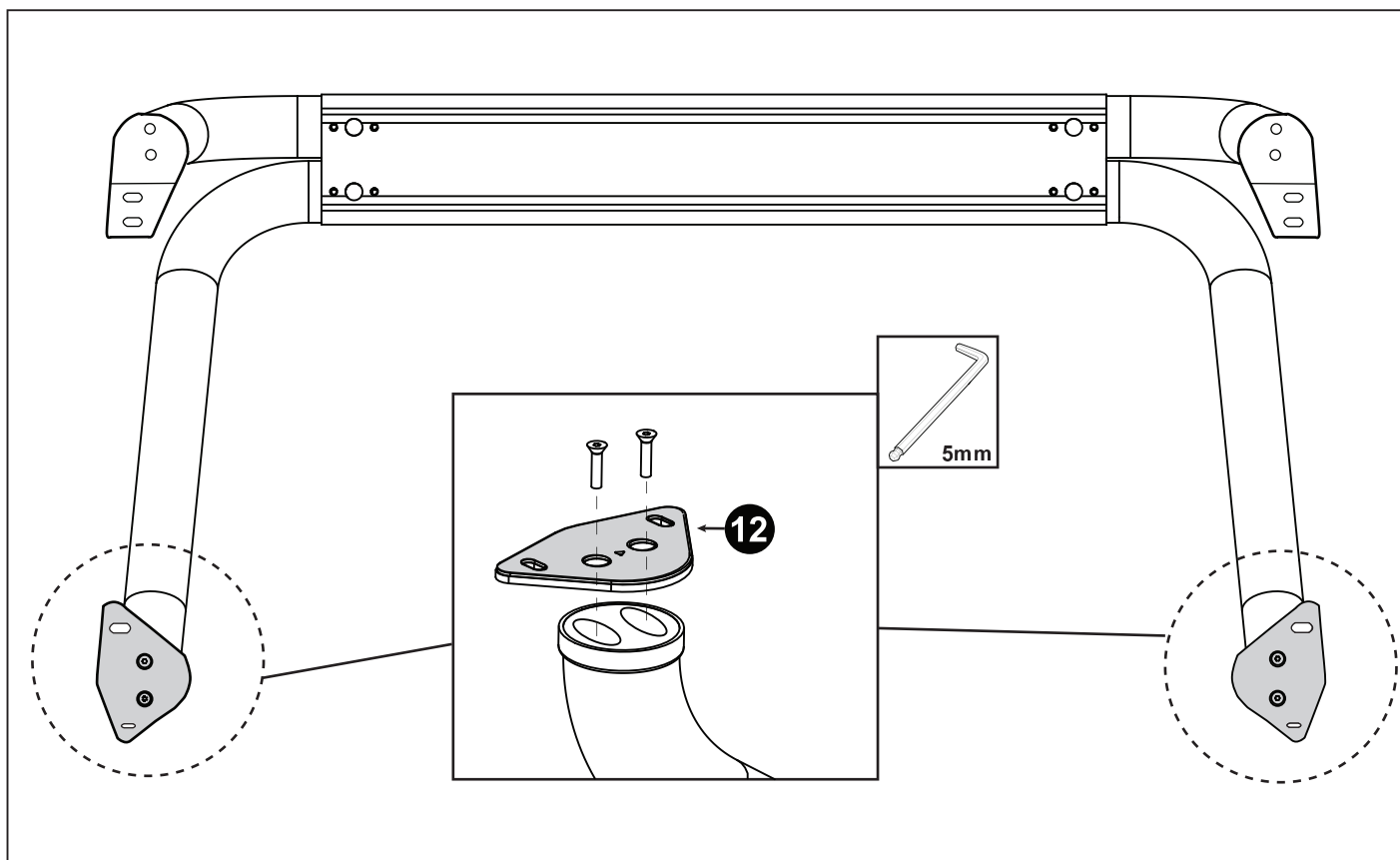
6. Apply 4 x rubber feet to base of each leg. Orientate as shown in image.



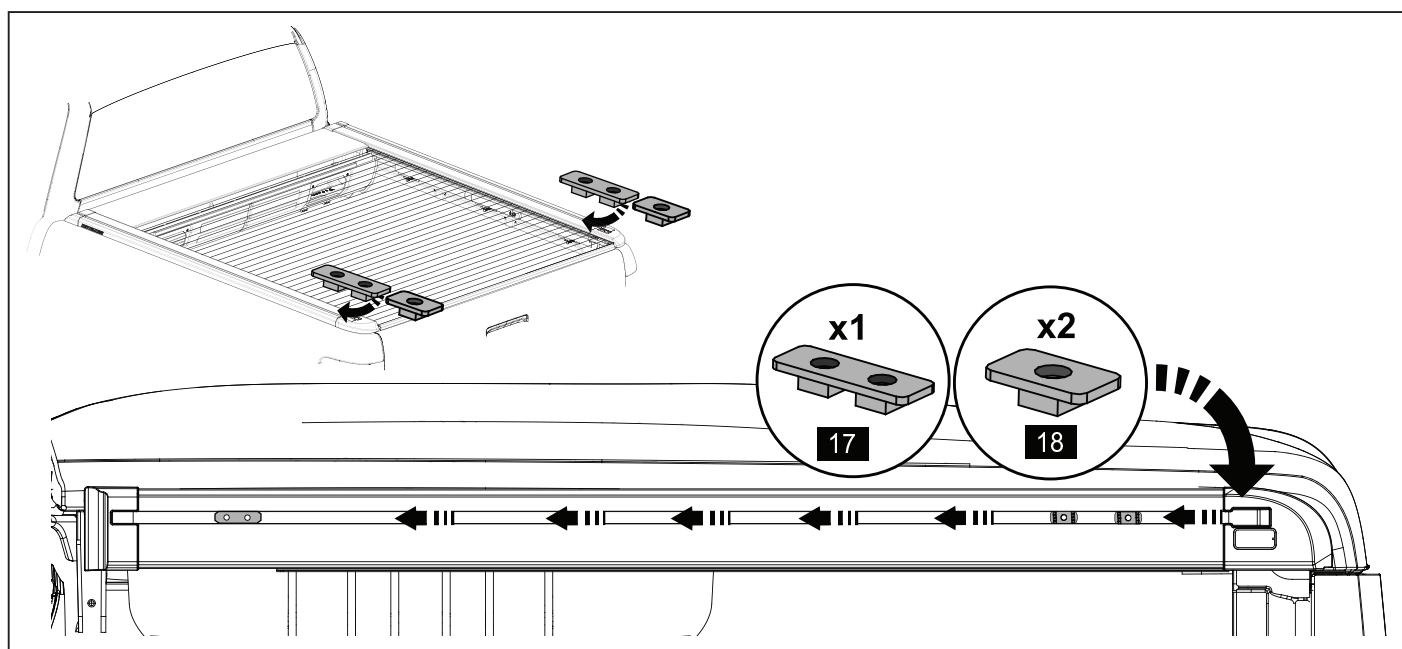
7. Attach RH rear Sports Bar foot mount as pictured using M8 x 30mm flat hex countersunk bolt.

Repeat on LH side

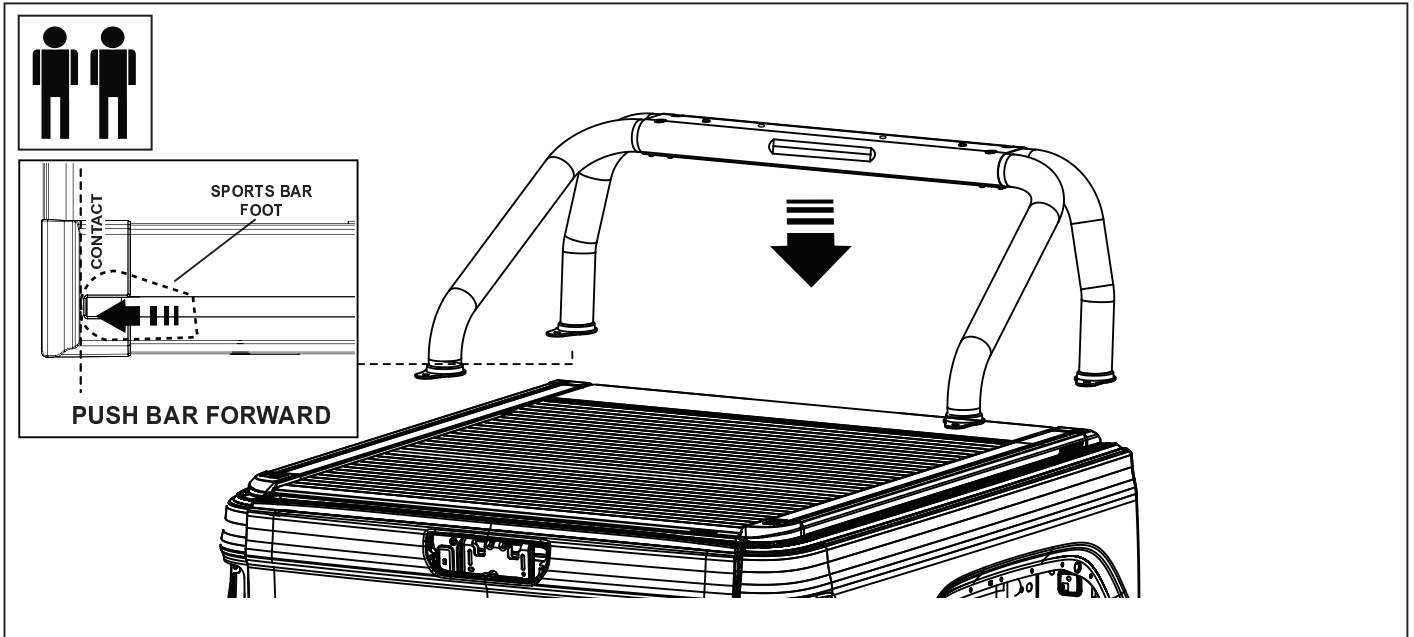
NOTE: Do not tighten screw fully.



8. Install the remaining Mount Brackets (12) to the Sportsbar foot ends over the Foot Cups and secure using the M8x30mm flat hex head screws (13).  
 NOTE: Do not tighten the screws fully.  
 NOTE: The two Mount Brackets (12) are identical.



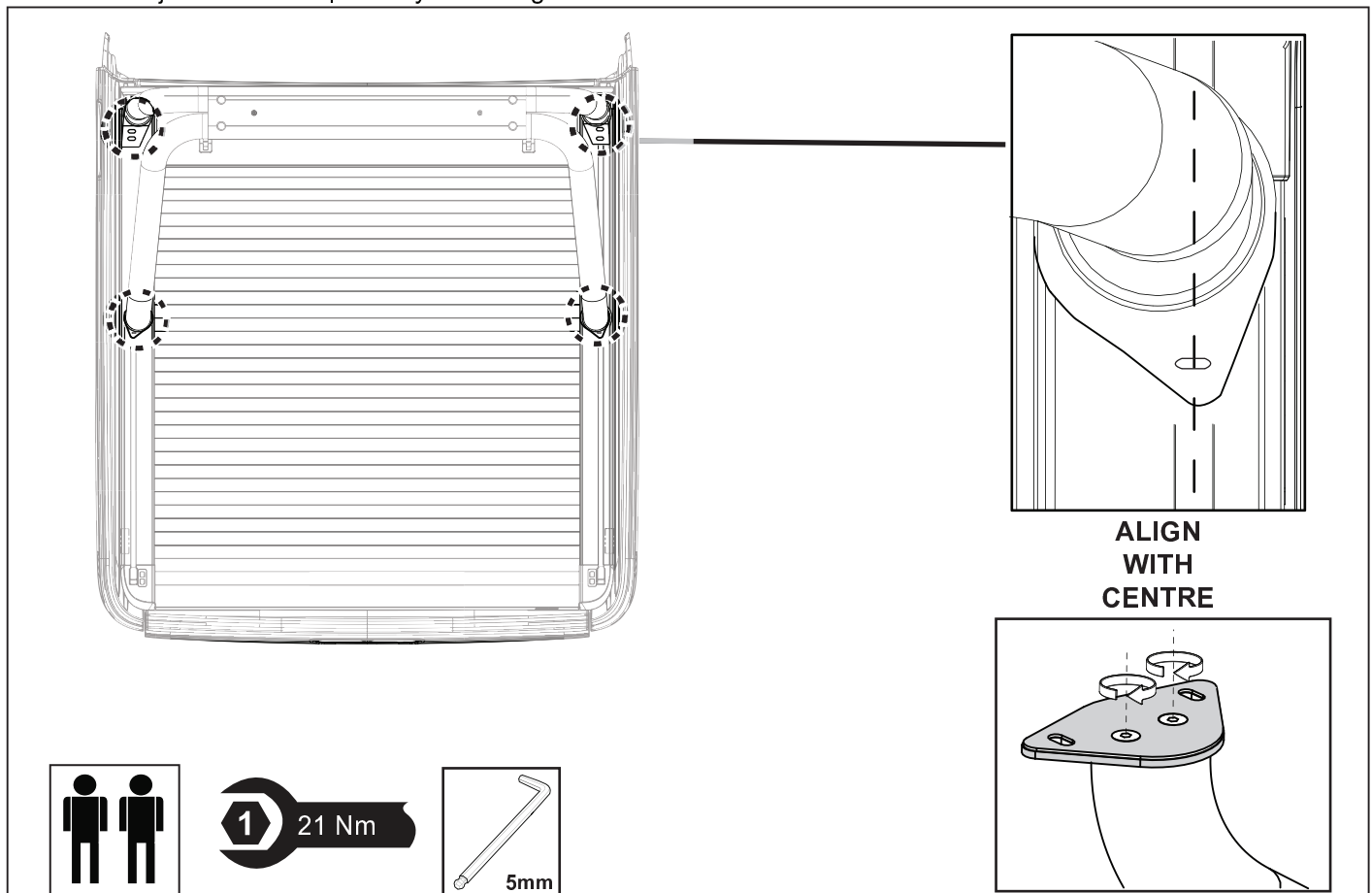
9. Insert Double M8 Nut Plate into LH side accessory rail of Rolltrac.  
 Insert two M8 Nut Plates into LH accessory rail of Rolltrac.  
 Repeat for RH side.



10. Using two people, carefully lift the Sportsbar assembly above the RollTrac and carefully lower the Sportsbar assembly over the RollTrac side rail.

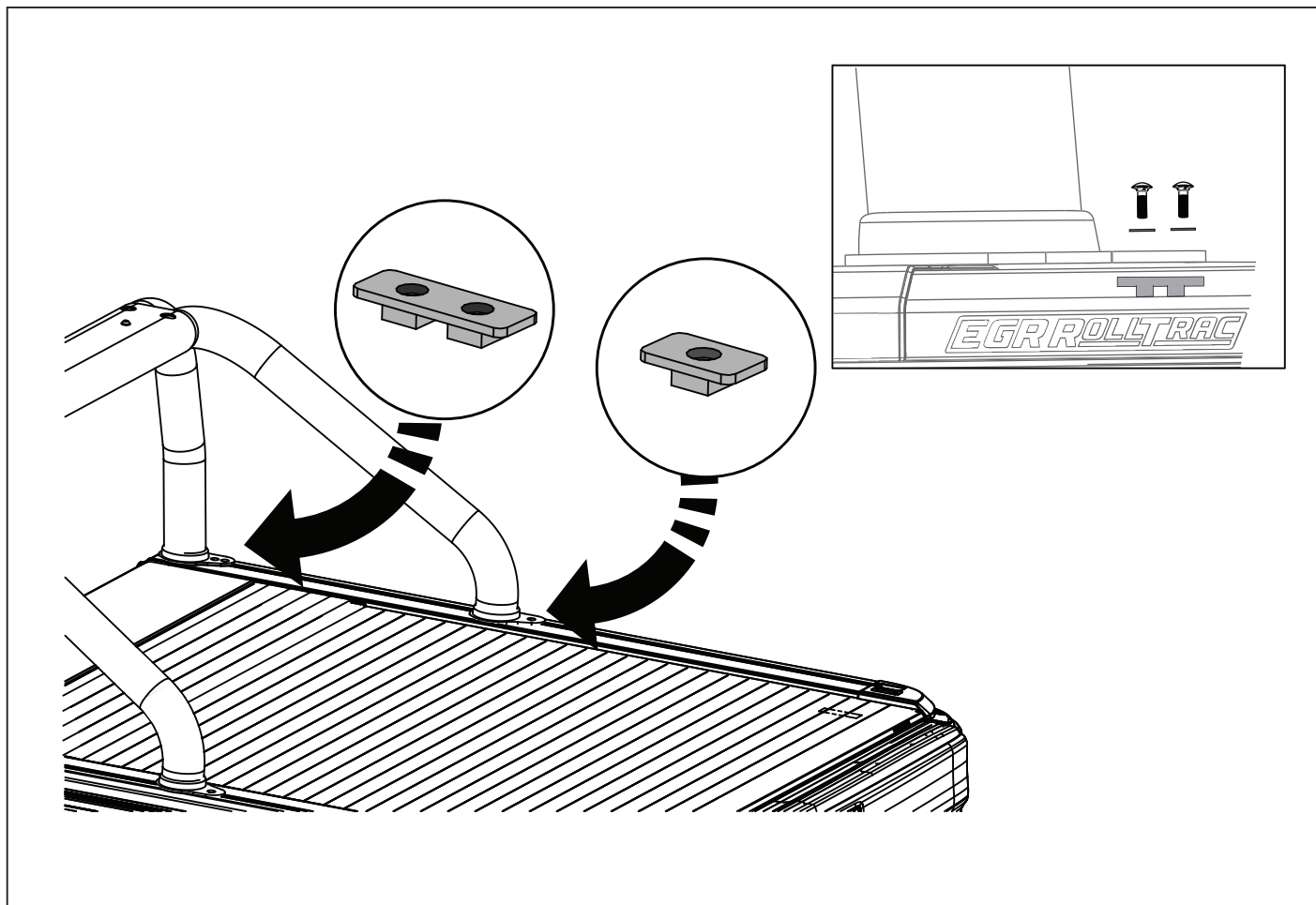
NOTE: Take caution when lifting Sportsbar assembly. Items such as rings, watches and belt buckles may damage the finish.

NOTE: Adjust tubes if required by loosening the screws.



11. Slide double M8 Nut Plate under rear foot aligning holes followed by two M8 nut plates under the front foot aligning holes.

Using M8 x 20mm bolts, M8 x 20mm flat washer & M8 Split washer. Loosely attach sports bar foot to rolltrac as can be seen in detail view.

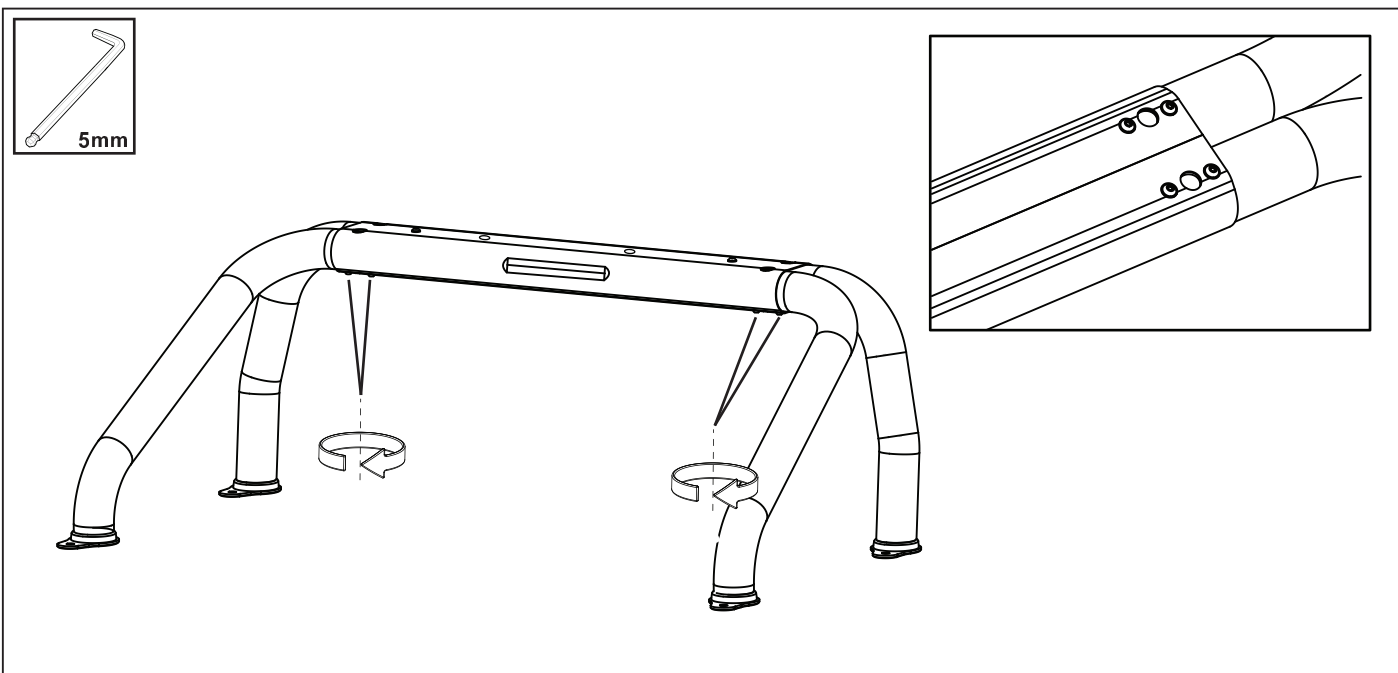


12. Rotate the 4 Mount Brackets and align the holes to the Rolltrac Side rail T-Channel as shown. Once the Mount Bracket holes are aligned with the T-Channel, carefully lift up the sports bar and **torque the bolts to 21Nm**.

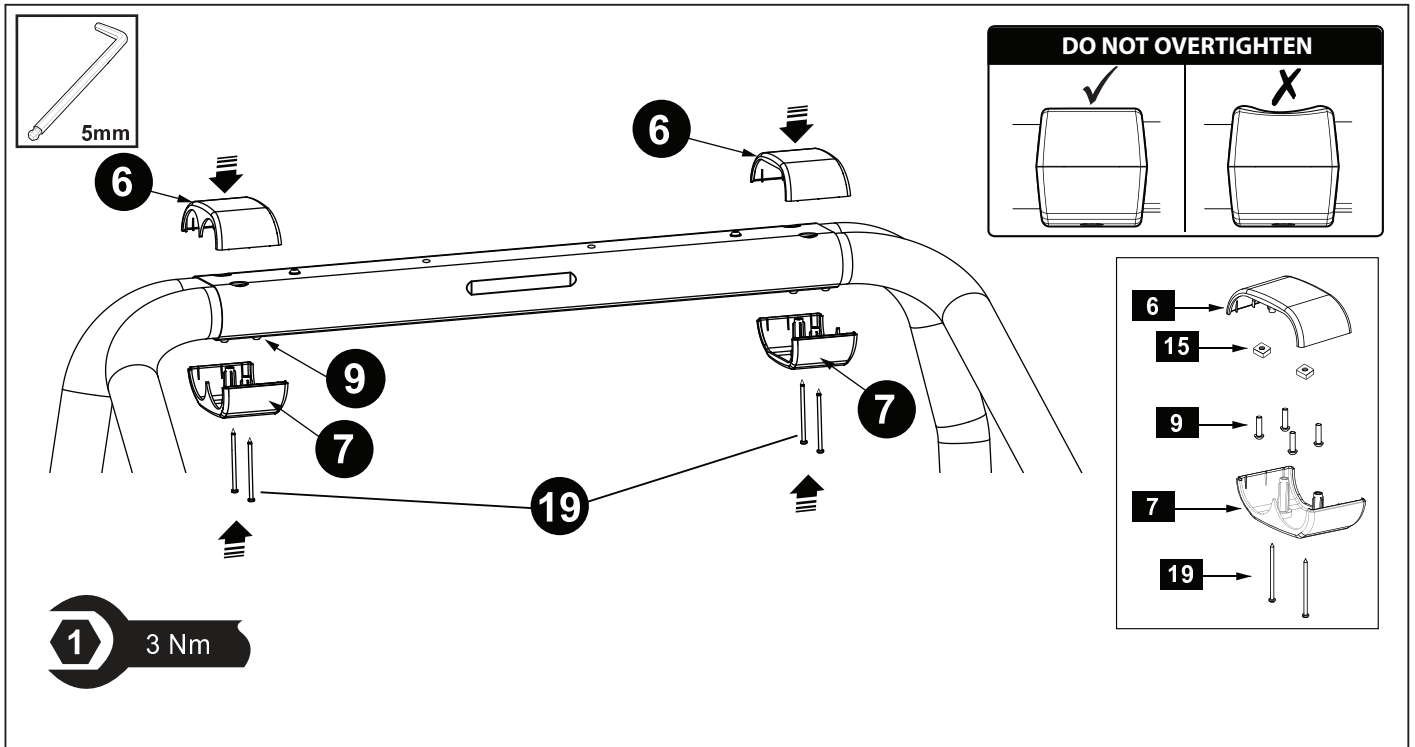
NOTE: Two people will be required to secure and torque the Mount Brackets.

NOTE: Take caution to not damage vehicle.

NOTE: If preferred, the Sportsbar may be removed from the vehicle to torque the screws.

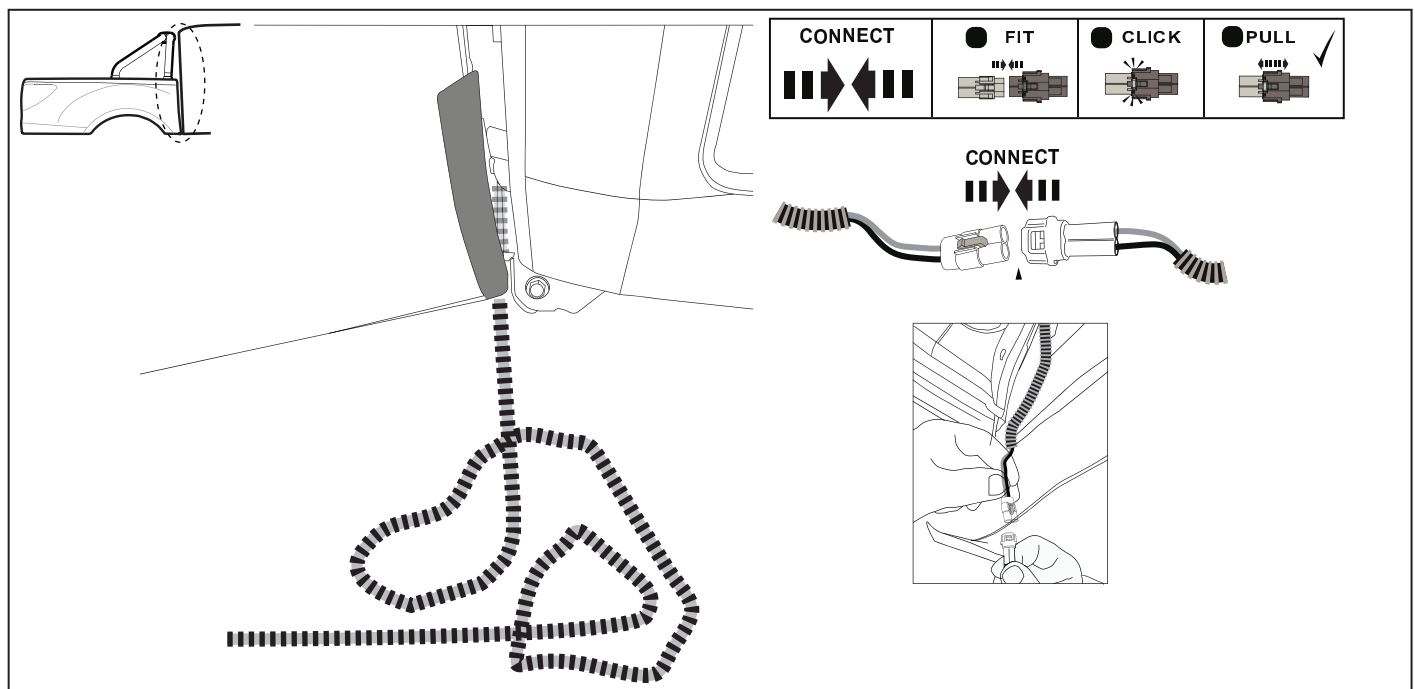


13. Tighten 8 bolts underneath centre section to 7nm.

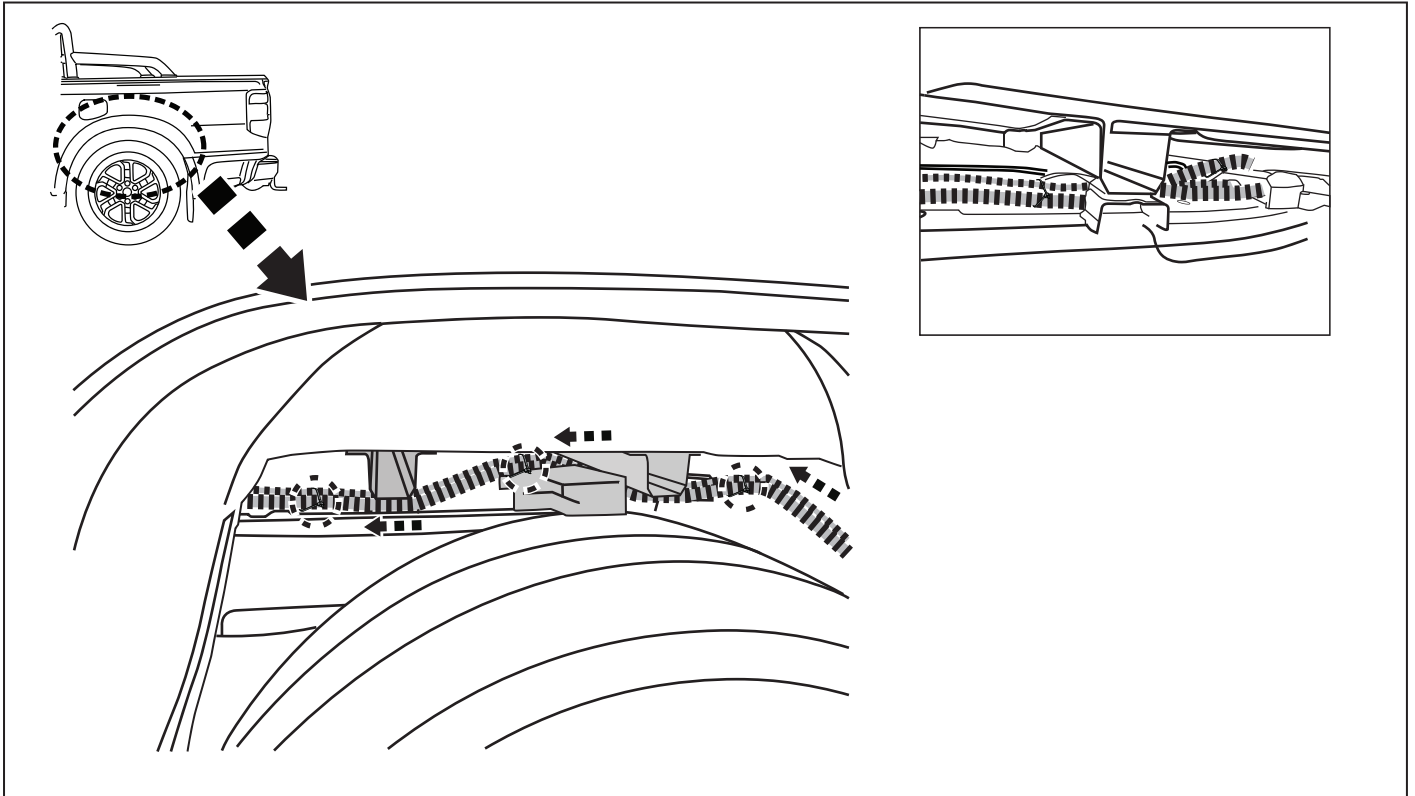


- 14.** Insert the plastic spacer between upper sports bar legs  
Attach top and bottom cover pieces with the two supplied M5x60mm screws.

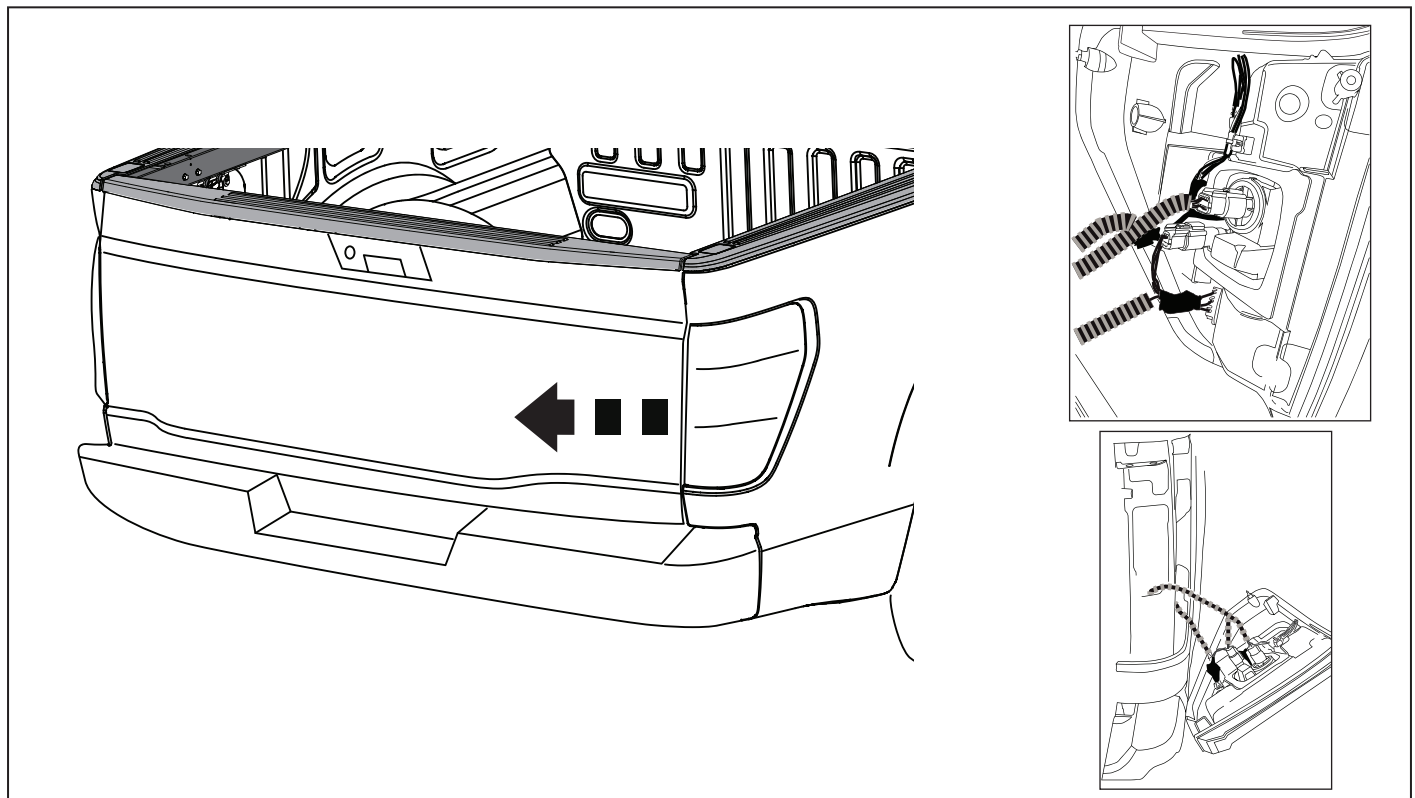
NOTE: Don't over tighten. Repeat for other side



- 15.** Connect Sports Bar plug to vehicle loom.  
Run wiring loom between tub and cab, ensure that loom sits behind rubber seal between cab and tub.  
Run wiring loom from front of the tub along the existing wiring loom towards the rear RH taillight

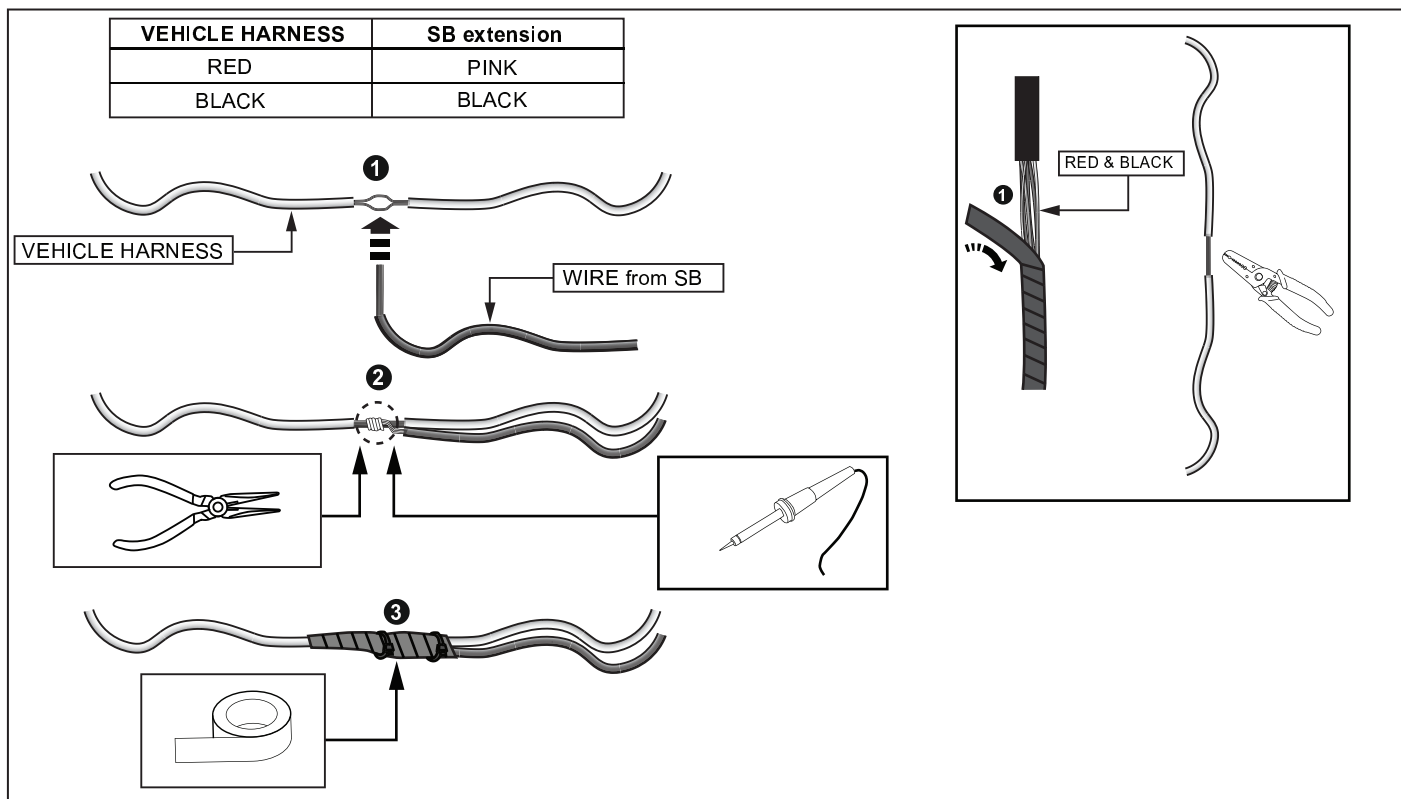


- 16.** Run wiring loom from the front of the tub along the existing wiring loom toward the rear RH taillight.  
Attach with cable ties every 200 -300mm



- 17.** Remove RH side tail light, proceed to remove & retain the two 10mm bolts.  
Unplug wiring loom from the tail light.  
Using needle nose pliers release the three retaining clips holding the loom to the tail light.

Put tail light aside in a safe place, so it does not get scratched.



**18.** At the end of the convoluted split tube, peel back black electrical tape to reveal wiring loom.

Locate and solder wires as shown above, then wrap each solder joint separately with electrical tape & wrap both together.

Refit Taillight & tighten with 2 x 10mm bolts saved previously.